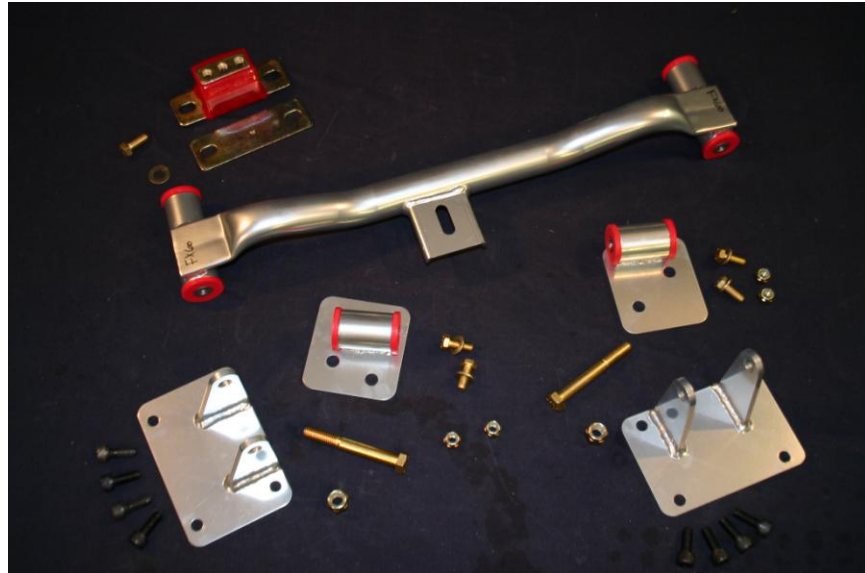


Phone Number 1-770-751-0687

Fax 1-770-442-9597

WWW.BRPHotRods.COM

Installation Guide for 1978-1993 Fox Body Mustang



Hardware and Parts List

All motor mounts come with a lifetime warranty and free replacement upon return of any mount or bracket.

<u>Quantity</u>	<u>Item:</u>
2	Frame Brackets
2	Motor Mounts
1	Transmission Crossmember
1	Polyurethane Transmission Mount
2	3/8"-16 x 5 1/2" Transmission Cross member to Frame Bolts
4	3/8" Flat Washers
2	3/8"-16 Nylon Lock Nuts
1	7/16"-13 x 1" Transmission Mount Bolt
1	7/16" Flat Washer
4	1/2"-13 x 1 1/4" Frame Bracket to Frame Bolts
4	1/2" Flat Washers
6	1/2"-13 Nylon Lock Nuts
2	1/2"-13 x 4" Motor Mount to Frame Bracket Bolts
8	10mm-1.5 x 25mm (Allen Head) Engine Mount to Block Bolts

Step 1: Locate the Driver's Side (LEFT) and Passenger's Side (RIGHT) motor mounts and loosely bolt them to the engine using the supplied 10mm allen head bolts, now loosely bolt the frame brackets to the engine mounts using the supplied 1/2"-13 x 4" long bolts and nylon lock nuts. (The bolts will be tightened after the engine is set in place and everything is lined-up)



(Detailed view of driver's side motor mount and frame bracket on engine)

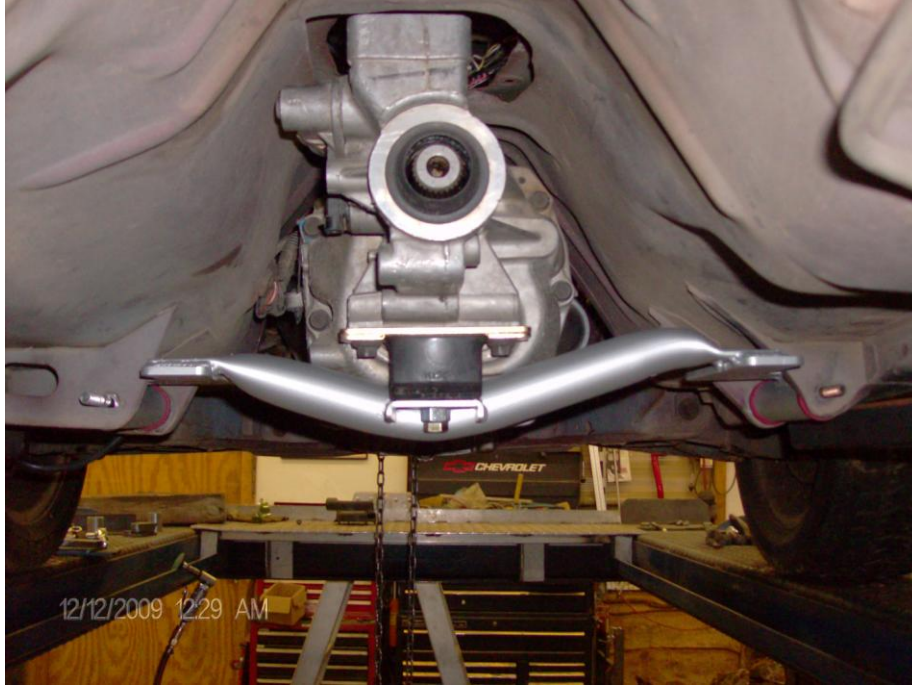


(Detailed view of passenger's side motor mount and frame bracket on engine)

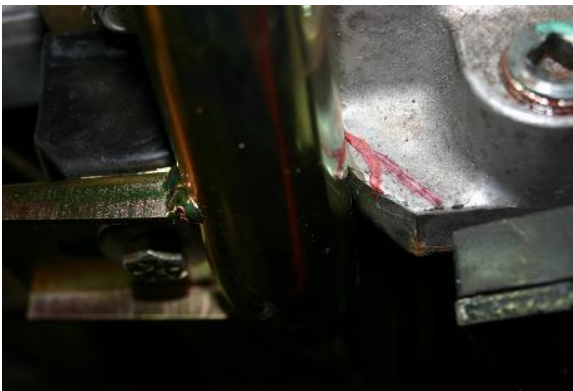
Step 2: Lower the engine into the chassis and align the frame bracket to frame bolt holes and loosely install the 1/2"-13 x 1 1/4" bolts, flat washers and nylon lock nuts.



Step 3: Lift the rear of the transmission using a floor jack. Install the polyurethane transmission mount on the transmission, making sure that you install the provided plate between the mount and the transmission (this preloads the polyurethane mount). Install the transmission crossmember into the chassis and bolt the polyurethane mount loosely to the crossmember using the 7/16"-13 x 1" bolt and the 7/16" flat washer. Loosely install the crossmember to frame bolts (3/8"-16 x 5 1/2" bolts, flat washers and the 3/8"-16 nylon lock nuts).



(This picture shows the T-56 6-speed cross member. The 4L60E cross member installs in the same way. The 78-81 Mustangs/Fairmonts will need modification to the transmission mounting tabs to fit.)



NOTE: If you are running the T-56 transmission, you will need to grind the casting tab down some to make clearance for the cross member.

Step 4: Once you have checked to make sure that everything is installed correctly and lined up go back and tighten the engine mount to block bolts, engine mount to frame bracket bolts, frame bracket to frame bolts, transmission mount to transmission bolts, transmission mount to crossmember bolts and transmission cross member to frame bolts.

Oil Pan

The kit will work with the following oil pan:

- 2004-2007 Cadillac CTS-V oil pan



Uses the following OEM front accessory drive systems:

- C-5 Corvette,
- F-Body,
- GTO (may need 98-02 Camaro alternator, it is smaller in O.D.)



Note: If you plan on running A/c in the car, you must install a $\frac{3}{4}$ " spacer between the sway bar brackets and the frame in order for the compressor to clear the sway bar.)

The Muscle Rod line of headers from Husler is designed to bolt in with this kit for an easy bolt in install with great performance and fitment.



Road test your vehicle to familiarize yourself with its new handling characteristics. BRP Hot Rods cannot supervise your installation of these parts and systems cannot be held responsible more than the cost of the kit and/or parts. The vehicle should be operated normally. Contact BRP if you need anything or if we can be of assistance. (Check the BRP web site for additional help).

Thank you for purchasing a Muscle Rod conversion kit proudly made in the USA.